

Extrusion tooling

Technical tooling

System development

Service for extrusion tooling

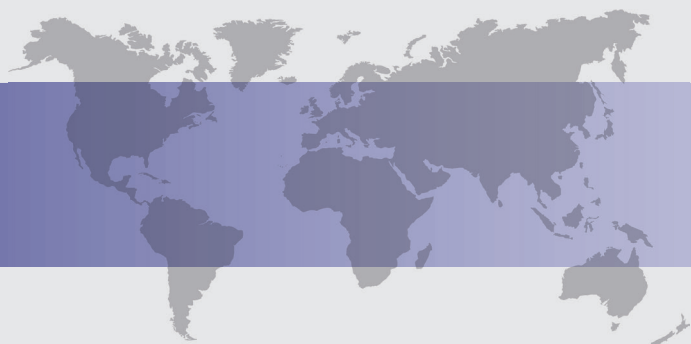
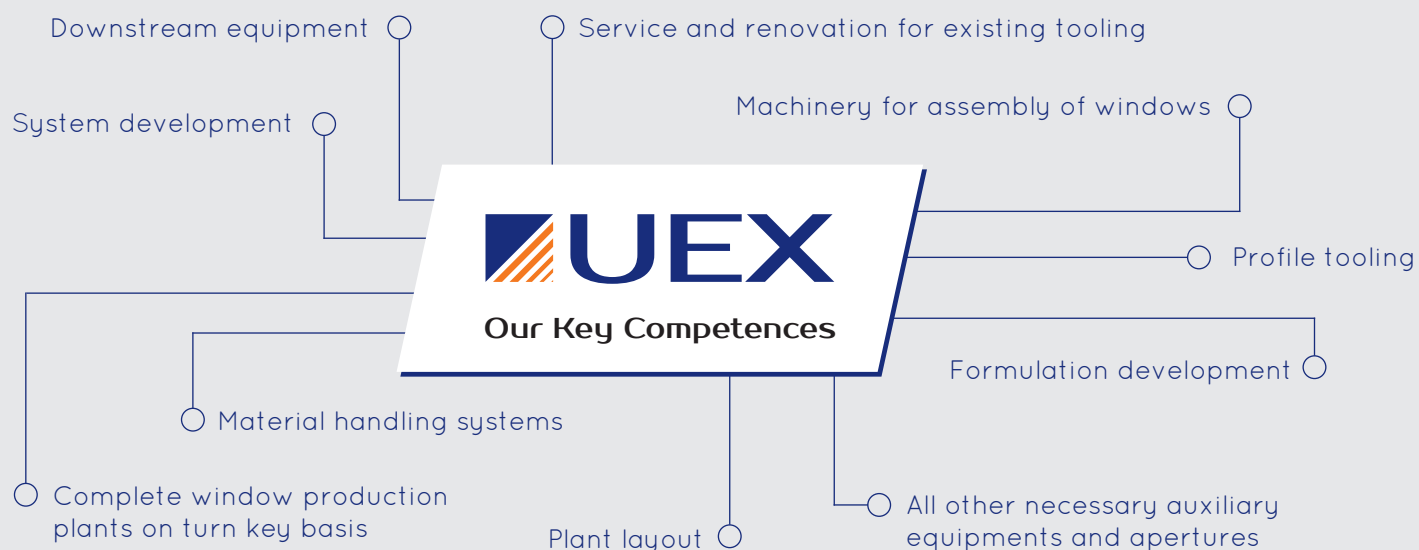
Turn key project

Development for extrusion

**The extrusion network company**



- With national and international cooperation we come up to extensive technological know-how and flexibility for our customers with an attractive price-performance ratio.
- Our solutions are transparent, confidential and according to customer request.
- We accept the challenge of special requests and developments.
- With United Extrusion you have a competent partner from raw material up to final products for extrusion market.



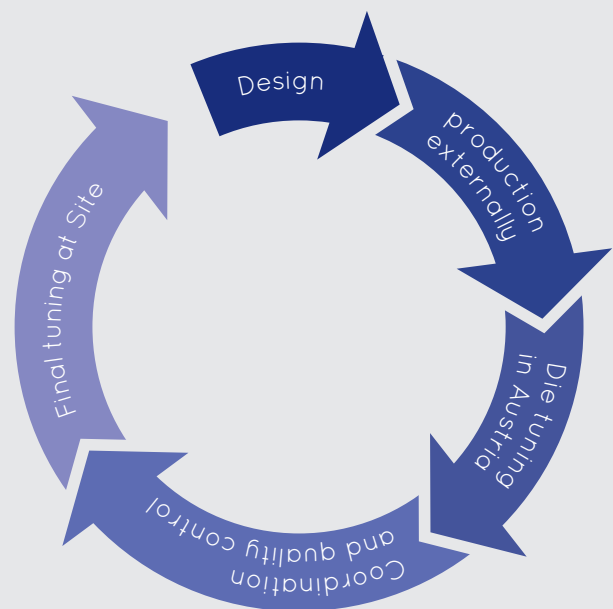


## Tuning centre Austria

At UEX you'll get everything from one source.

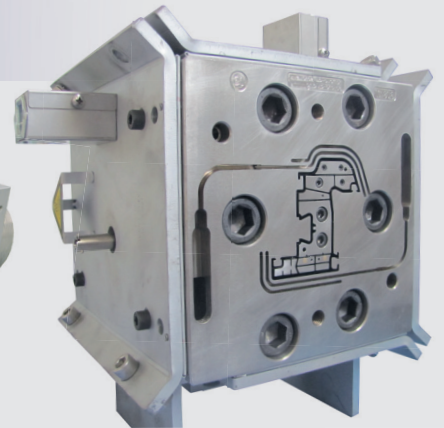
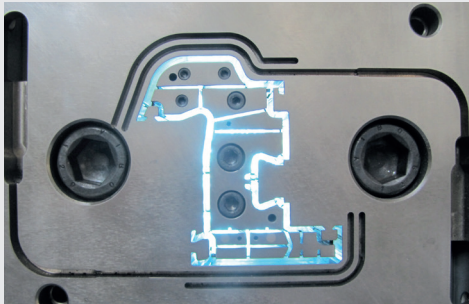
### tuning possibilities

- › twin screw extruder up to 300 kg/h for PVC window profiles
- › single screw extruder for all kind of plastics 45 mm and 60 mm, output 5 - 100 kg/h



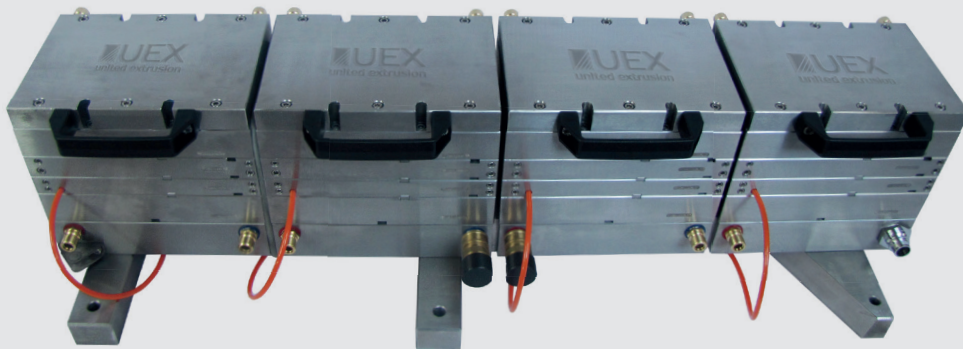
## The extrusion network company

## Extrusion die



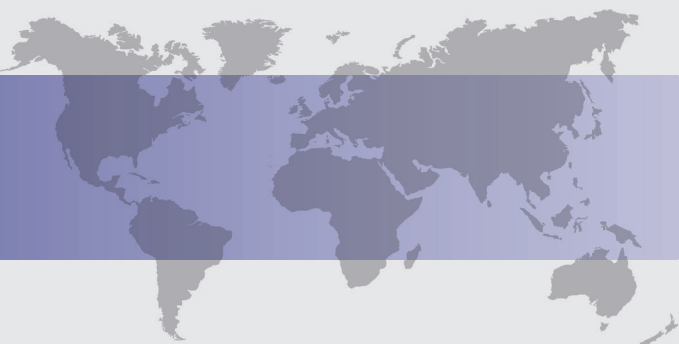
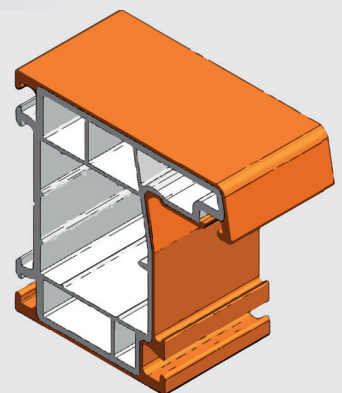
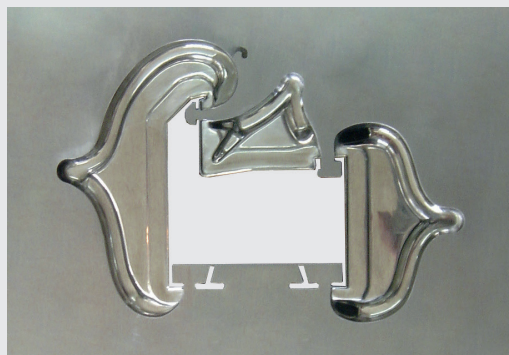
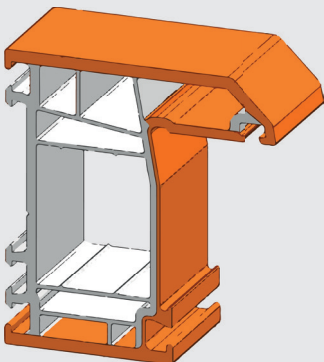
Sandwich or mandrel die with or without Co-Extrusion

## Calibrator

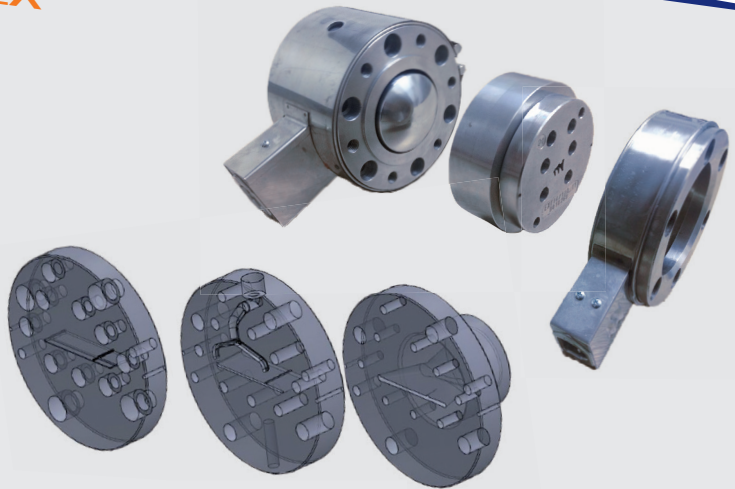


Best steel quality from Austria | O-ringfree tooling / central water and vacuum system

## Co-Extrusion



## Technical Tooling Design | UEX



### Die head

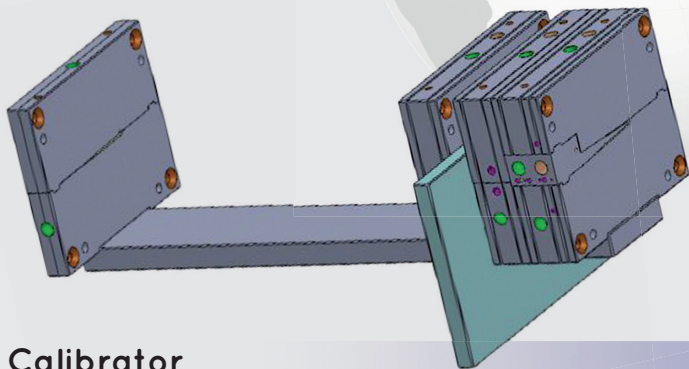
- > Die adapter
- > Compression plate with or without Co-Ex
- > Front plate
- > Heater band with temperature sensor

### Universal die head

- > Universal die head 60 or 70 mm
- > Changeable die with 2 or 3 plates
- > Heater band with thermo coupling

#### Advantage

- > Quick and easy changing
- > Less modification time
- > Less costs for order of 5 or more toolings
- > Homogeneously material flow



### Calibrator

- > Calibration plate for water tank
- > Holding plate for calibration (500 x 80 x 20)
- > Calibre 1: 44 - 72 mm with vacuum and water
- > Calibre 2: 36 mm with vacuum
- > Calibre 3: 36 mm with vacuum

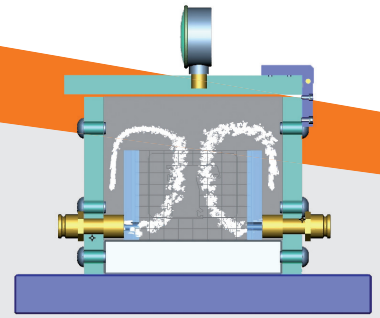


### Water tank

- > Water tank 1 m
- > Water tank 2 m
- > Water tank 3 m

The extrusion network company

# Extrusion Tooling | Special Features

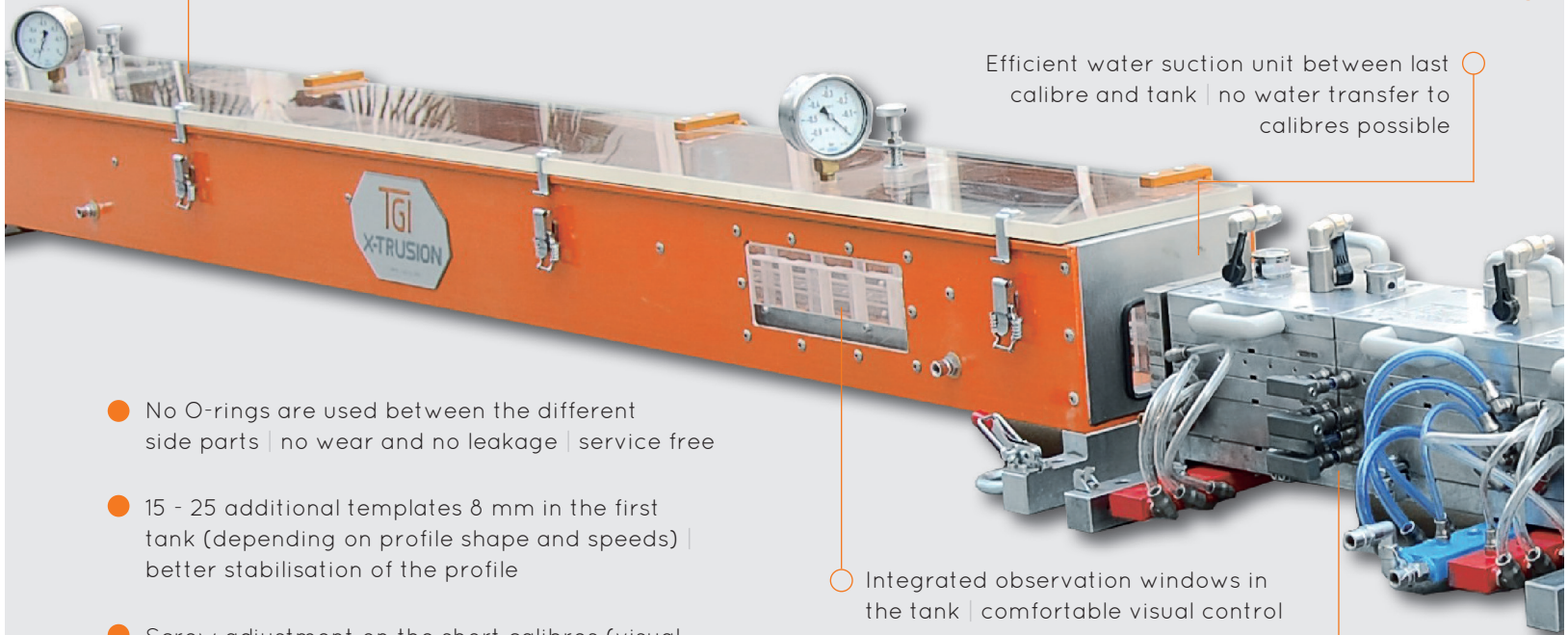


Patented Double wall tank | reduced water consumption |  
stable flow | similar temperatures all over the total tank length | no fluctuation/pumping |  
water level can be adjusted on 2 sides

Fibreglass tank | shock resistant

Individual vacuum adjustment on each dry calibre | energy saving

Efficient water suction unit between last  
calibre and tank | no water transfer to  
calibres possible



No O-rings are used between the different  
side parts | no wear and no leakage | service free

15 - 25 additional templates 8 mm in the first  
tank (depending on profile shape and speeds) |  
better stabilisation of the profile

Screw adjustment on the short calibres (visual  
surfaces) in the first tank | surface/flatness  
can be additionally controlled and adjusted

Quick couplings between dry calibre and tank,  
tank and tank and tank and PCE if available

No narrow cooling channels at detail  
sections | no plugging possible

Central vacuum | easy to handle

Optional:

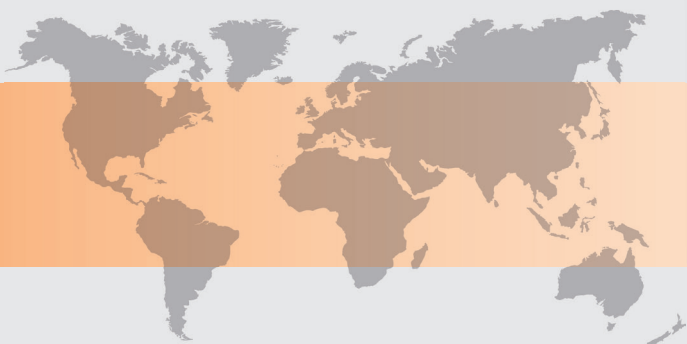
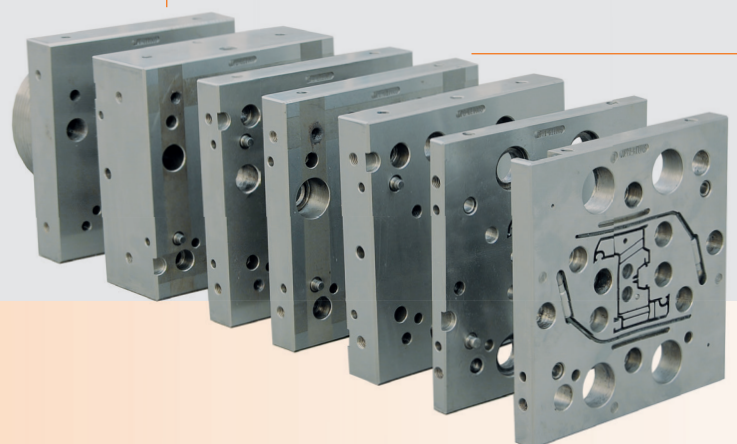
Vacuum gauges (European brand) and  
horizontally integrated in the top lid | high  
quality | well protected against external damages  
Solid carbide inserts | reduced wear and tear

Integrated observation windows in  
the tank | comfortable visual control

Special Cooling connections (bridges)  
between calibres | no tubes

In the last dry calibre the vacuum is in  
2 sections | additional possibility for adjustment

Die without mandrel ("sandwich- plate die") |  
high stability during production



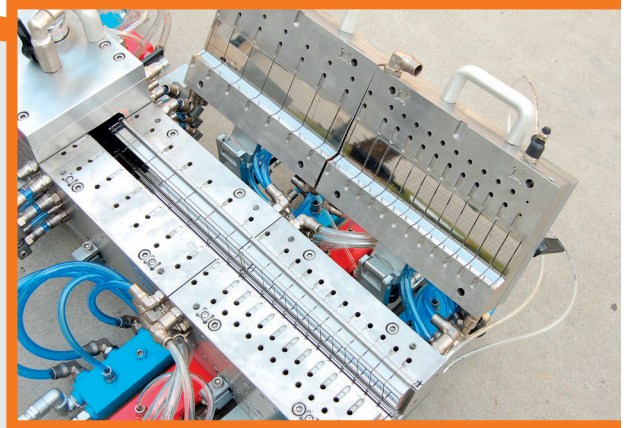
# TGI X-TRUSION

- Dry calibrators with 250 mm length instead of 200 mm as used in standard tooling | increased total dry calibre length | more efficient cooling | higher output speeds

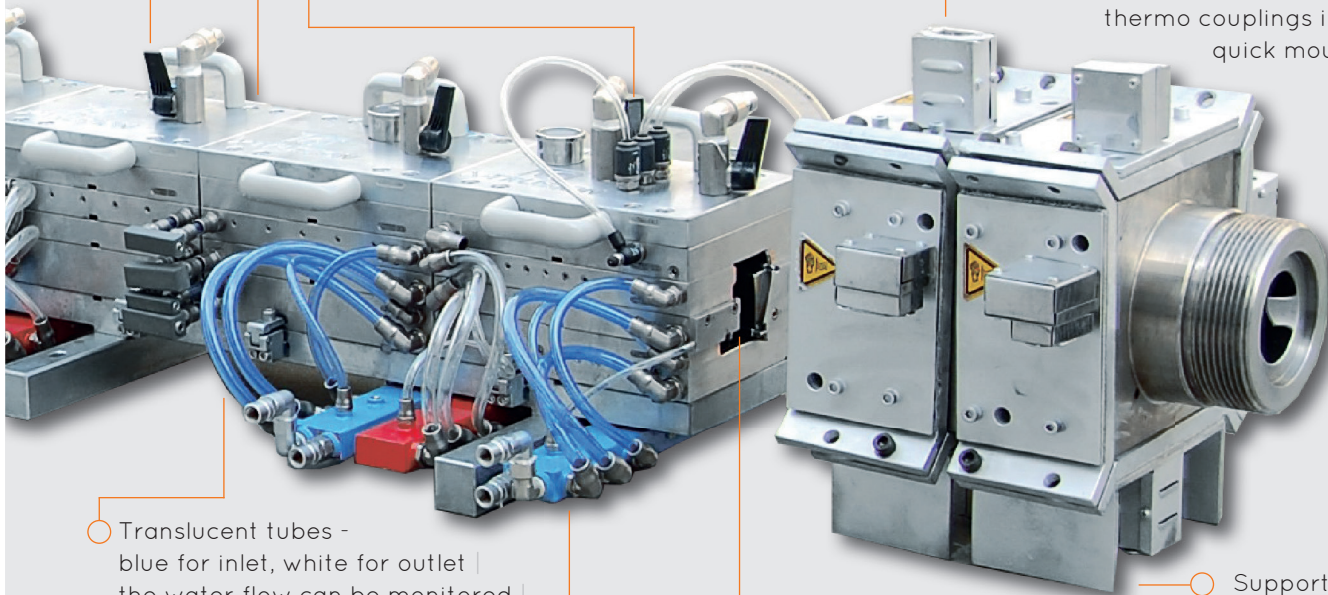
Distance between the dry calibres is 1 mm | less wear

- Additional adjustable water cooling at the inlet section ("ironing") | gloss on the visual surfaces can be precisely controlled

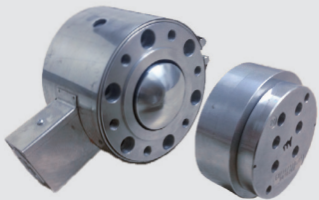
Special positioned mounting pins | no movement of dry calibre side parts possible



- Heater band with integrated thermo couplings in one unit | quick mounting



- Translucent tubes - blue for inlet, white for outlet | the water flow can be monitored | easy visual control that all channels are 100% floated

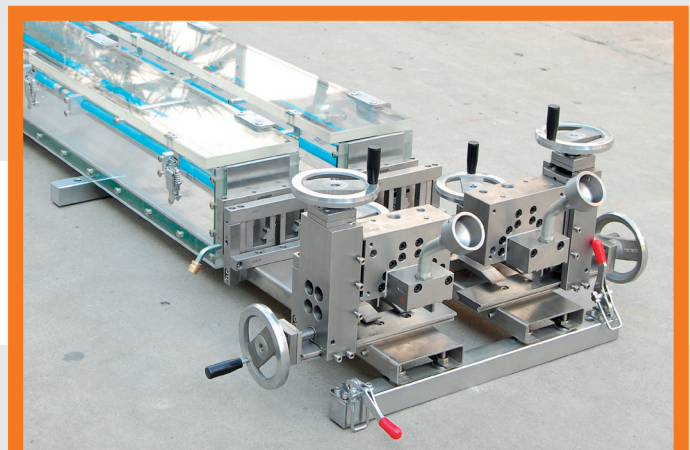


- AIC: "Air-Inlet-Cooling" for the first dry calibre with individual adjustment for each section | the regulation of each sensitive section is possible | no more sticking of material especially at high speeds

- Support plates | easy storing and plugs are well protected

- Each section of the tooling has its separate water inlet and outlet | constant water flow in each section | stabile cooling

- Additional slots in the die head (in case of gloss heating) for preventing the heat flowing to the outside of the die head | heat is guided to where it is needed (to the visual surfaces)



# UEX

united extrusion



## Headoffice Austria



icomp GmbH  
Mühlgruberstraße 40  
4540 Pfarrkirchen | Austria  
T: +43 7258 7768-0  
F: +43 7258 7768-15  
W: [www.tgix.eu](http://www.tgix.eu)  
M: [office@tgix.eu](mailto:office@tgix.eu)  
Contact: Mr. Siegfried Kögler  
C: +43 676 951 88 49  
M: [sk@tgix.eu](mailto:sk@tgix.eu)



TGI Extrusion Technology GmbH  
Mühlgruberstraße 40  
4540 Pfarrkirchen | Austria  
T: +43 7258 7768-0  
F: +43 7258 7768-15  
W: [www.tgix.eu](http://www.tgix.eu)  
M: [office@tgix.eu](mailto:office@tgix.eu)  
Contact: Mr. Siegfried Kögler  
C: +43 676 951 88 49  
M: [sk@tgix.eu](mailto:sk@tgix.eu)



## Agends

**Russia, Ukraine und GUS Staaten**  
Plastic Business Solutions  
Per. Kolomiewsky 8, Ap. 38  
03127 Kiew, Ukraine  
Contact: Mr. Mykhaylo Libus  
C: +38 050 462 49 62 (Ukraine)  
C: +7 926 464 27 90 (Russia)  
M: [ml@tgix.eu](mailto:ml@tgix.eu)

**Turkey**  
TGI Extrusion PVC  
Kalip Servis San.Tic.Ltd.Sti  
Mimar Sinan Mah. Beyazit Sok. Nr. 4a  
Özdağ Sitesi  
34570 Silivri Istanbul  
Contact: R. Nalan Matthaiei  
C: (+90) 0532 120 60 93  
M: [nm@tgix.eu](mailto:nm@tgix.eu)

**United Kingdom & Ireland**  
RobMar (Consultancy) Ltd.  
7 Brookside | Leeds  
LS17 8TD | England  
T: +44 (0) 113 217 4487  
F: +44 (0) 113 225 9280  
M: [marshall.co@virgin.net](mailto:marshall.co@virgin.net)  
Contact: Mr. Robert Marshall  
C: +44 (0) 7968 227048

**Iran**  
KBP Consulting and Trading Corporation  
Mr. Reza Gharaee  
T: +98 21 22098834-5  
F: +98 21 22098836  
C: +98 912 289 7304  
W: [www.kbpcorp.com](http://www.kbpcorp.com)  
M: [r.gharaee@kbpcorp.com](mailto:r.gharaee@kbpcorp.com)

